



SOUTHERN CALIFORNIA
ASSOCIATION OF GOVERNMENTS
900 Wilshire Blvd., Ste. 1700
Los Angeles, CA 90017
T: (213) 236-1800
www.scag.ca.gov

REGIONAL COUNCIL OFFICERS

President
Cindy Allen, Long Beach

First Vice President
Ray Marquez, Chino Hills

Second Vice President
Jenny Crosswhite, Santa Paula

Immediate Past President
Curt Hagman
County of San Bernardino

COMMITTEE CHAIRS

Executive/Administration
Cindy Allen, Long Beach

Community, Economic, &
Human Development
David J. Shapiro, Calabasas

Energy & Environment
Rick Denison, Yucca Valley

Transportation
Mike T. Judge, Ventura County
Transportation Commission

MEETING OF THE

TECHNICAL WORKING GROUP

Thursday, August 21, 2025
10:00 a.m. – 12:00 p.m.

JOIN ZOOM MEETING

[HTTPS://SCAG.ZOOM.US/J/142774637](https://scag.zoom.us/j/142774637)

OR

DIAL BY YOUR LOCATION

+1 669 900 6833 US TOLL

+1 346 248 7799 US TOLL

MEETING ID: 142 774 637

If members of the public wish to review the attachments or have any questions on any of the agenda items, please contact Kevin Kane at (213) 236-1828 or via email at kane@scag.ca.gov. Agendas & Minutes for the Technical Working Group are also available at: <https://scag.ca.gov/technical-working-group>

In accordance with the Americans with Disabilities Act (ADA), SCAG provides accommodations for persons who require them to participate in public meetings. SCAG also provides translations of its documents upon request in accordance with Title VI. Both services can be requested with at least 72 hours (three days) notice in advance of the meetings by calling (213) 630-1410.

1. Connect SoCal Subregional SCS Framework and Preliminary Milestones
Camille Guiriba
15 minutes
[Packet page 5](#)
2. Key linkages between the RTP/SCS and RHNA allocation
Kevin Kane
15 minutes
[Packet page 13](#)
3. Demographic Data and Workshop Update
Kevin Kane
10 minutes
[Packet page 21](#)
4. General Update on Assembly Bill 130 (AB 130) and Senate Bill 131 (SB 131)
Karen Calderon
5 minutes (verbal update)



TECHNICAL WORKING GROUP

Meeting Minutes (Abridged)

May 22, 2022

10 a.m. – 12 p.m.

The meeting was held via Zoom teleconferencing.

Meeting Attendance

MEMBERS

Davis, Todd	Ventura County Planning	McKibbin, Stuart	City of San Jacinto
Diep, Deborah	CDR/CSUF	Shiomoto-Lohr, Gail	City of Mission Viejo
Garcia, Lane	South Coast AQMD	Smith, Steve	SBCTA
Ho, Andrew	City of Alhambra	Soto, Ricardo	City of Santa Ana
Huddlestone, Lori	LA Metro	Tendick, Jennifer	CARB
Koblasz, Ginger	SBCTA	Tso, Kristin	OCTA
Kim, Susan	City of La Habra	Van Simaeys, Julien	City of Moreno Valley
Lancaster, Mark	CVAG	Wikstrom, Alexander	LADOT
Masters, Martha	RCTC		
McCurley, Maia	City of Alhambra		

ALTERNATES & PUBLIC ATTENDEES

--



TECHNICAL WORKING GROUP

Meeting Summary

1. WELCOME TO TECHNICAL WORKING GROUP (TWG)

Kevin Kane kicked off the meeting with an overview presentation of the SCAG Working Group Charter for the TWG. Members and attendees are encouraged to share TWG registration with colleagues. There were no questions or comments on this item.

2. CONNECT SOCAL 2024: UPDATE

Sarah Dominguez presented a general update on Connect SoCal 2024, specifically the California Air Resources Board's acceptance of the Connect SoCal 2024 Sustainable Communities Strategy (SCS). Gail Shiimoto-Loehr (City of Mission Viejo) asked a question on this item.

3. SENATE BILL 375 (SB 375) TARGET UPDATE

Sarah Dominguez provided an overview of the pending update to the SB 375 target and SCAG's participation in the target setting discussions. Gail Shiimoto-Loehr and Kevin Kane (SCAG) participated in discussion.

4. 2028 RTP/SCS: MODELING YEARS

Sarah Dominguez shared with the TWG the modeling years to be used for the next RTP/SCS: 2024 Base Year and 2050 Horizon Year. There were no questions or comments on this item.

5. SCS SUBREGIONAL GUIDELINES

Camille Guiriba presented on the SCS Subregional Delegation Guidelines for the next plan cycle, sharing the proposed edits and next steps. Gail Shiimoto-Loehr, Sarah Dominguez (SCAG), and Kevin Kane participated in discussion.

Connect SoCal 2050: Subregional SCS Framework and Guidelines

Technical Working Group
August 21, 2025



The Southern California Association
of Governments' 2028-2050
Regional Transportation Plan/
Sustainable Communities Strategy

Senate Bill 375 Provisions for Subregions



- Allows for the development of subregional SCSs:
 - “a subregional council of governments and the county transportation commission may work together to propose the sustainable communities strategy and an alternative planning strategy, if one is prepared pursuant to subparagraph (I), for that subregional area.” Govt. Code §65080(b)(2)(D)
- SCAG’s “Framework and Guidelines” outlines the expectations and process

The **SCS** must...



Forecast for future
population,
employment, housing



Include GHG
reduction strategies

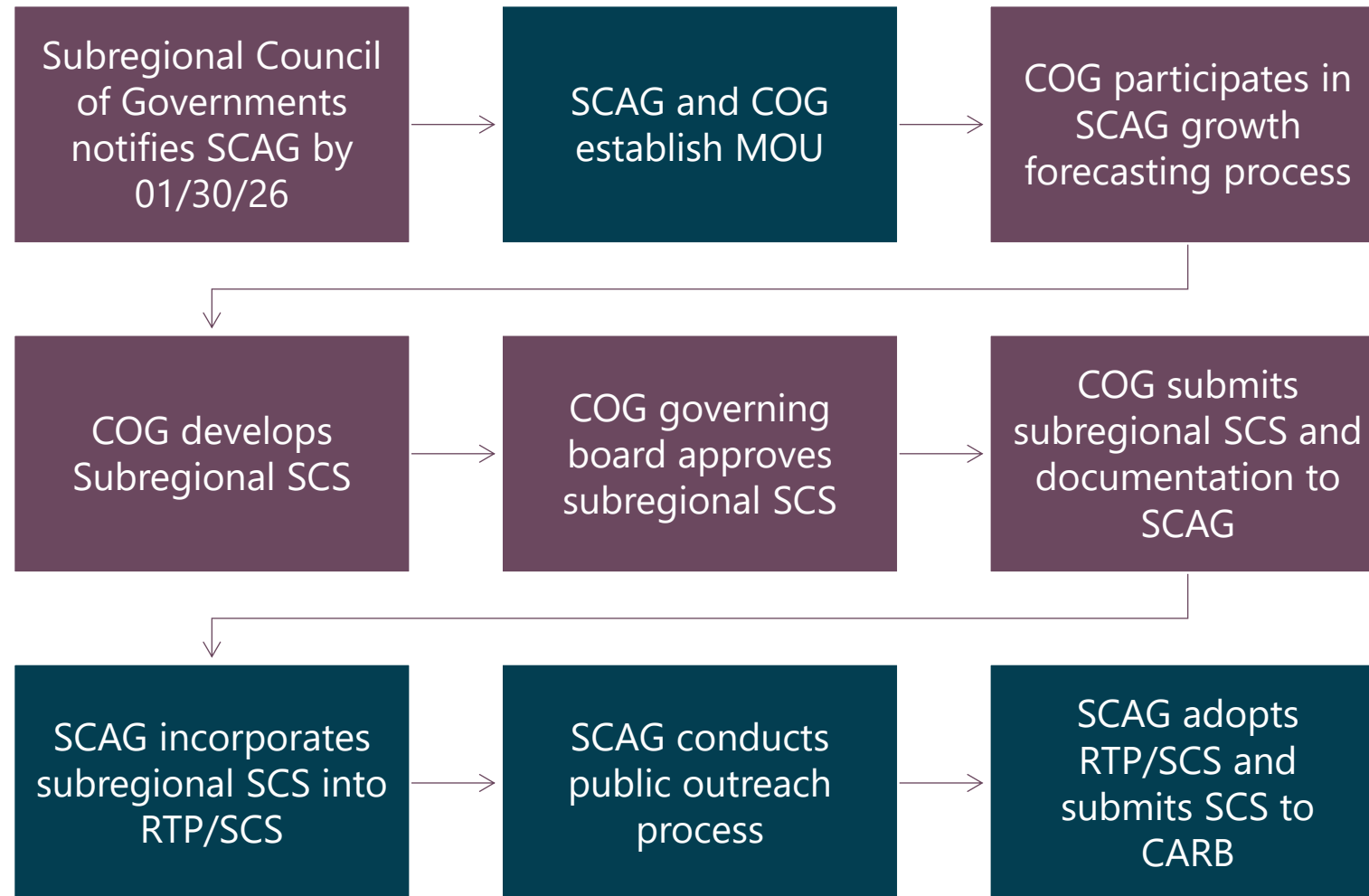


Report performance
measures

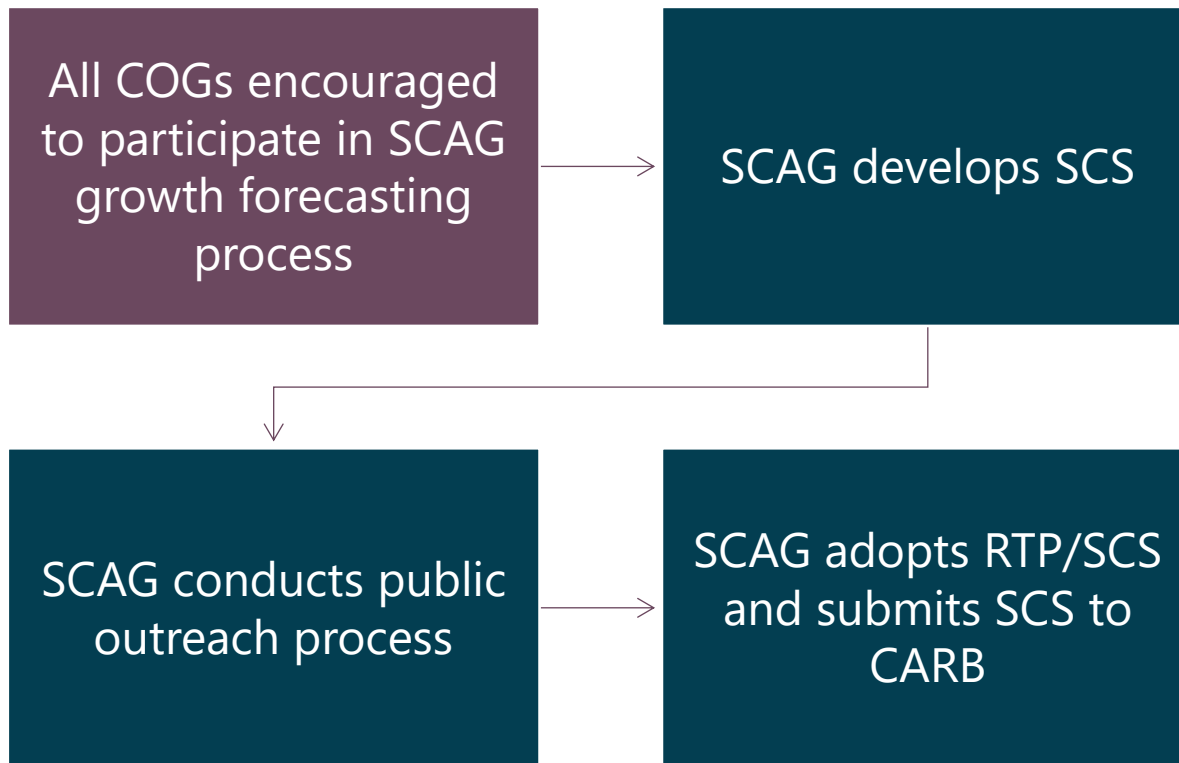


Be developed in
consultation with
key stakeholders
and the public

How Would Subregional Delegation Work?



What if Subregions Don't Delegate?



- COGs and stakeholders engaged through working groups and Executive Directors meetings
- Data and tools available regardless of subregional SCS delegation

Next Steps



January 30, 2026

**Deadline for
Subregions to notify
SCAG**

February 2026

**SCAG and COG staff
develop MOU**

Spring 2026

**SCAG and COG
approve MOU**

Connect SoCal Preliminary Milestones

COLOR KEY

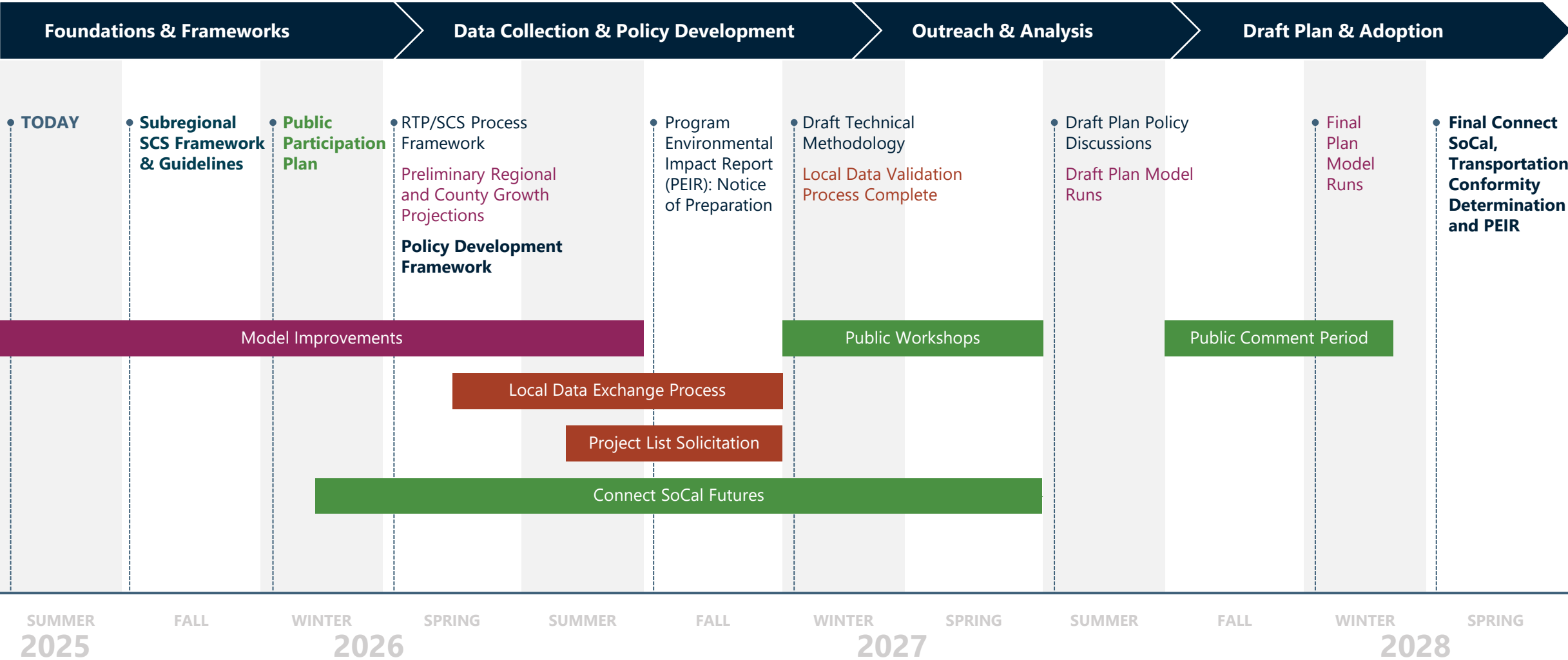
Plan Foundation & Elements

Local Agency Input Process

Modeling/Forecast

Outreach and Engagement

BOLD = ACTION ITEM



THANK YOU!

For more information, please contact:

ConnectSoCal@scag.ca.gov



The Southern California Association
of Governments' 2024–2050
Regional Transportation Plan/
Sustainable Communities Strategy

Key linkages between the RTP/SCS and RHNA allocation

Kevin Kane, PhD

Planning Supervisor, Demographics and Growth Vision

August 21, 2025

Technical Working Group (TWG)

WWW.SCAG.CA.GOV

Twin Statutory Provisions



- **The SCS must:**

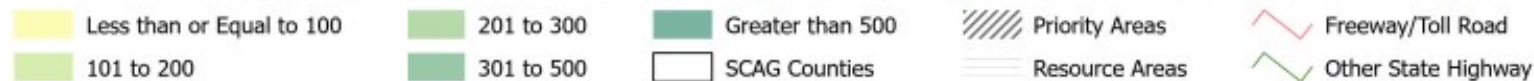
- “identify areas within the region sufficient to house an eight-year projection of the regional housing need for the region pursuant to Section 65584.” (Government Code 65080(b)(2)(B)(iii))

- **The RHNA must:**

- It is the intent of the Legislature that housing planning be coordinated and integrated with the regional transportation plan. To achieve this goal, the allocation plan shall allocate housing units within the region consistent with the development pattern included in the sustainable communities strategy. 65584.04(m)(1)



SCAG: Connect SoCal 2024 **MAP 3.3 Forecasted Regional Development Pattern (Household Density Growth 2019-2050)**

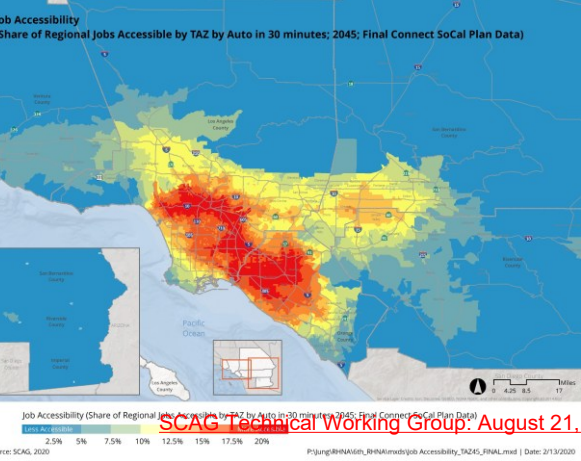
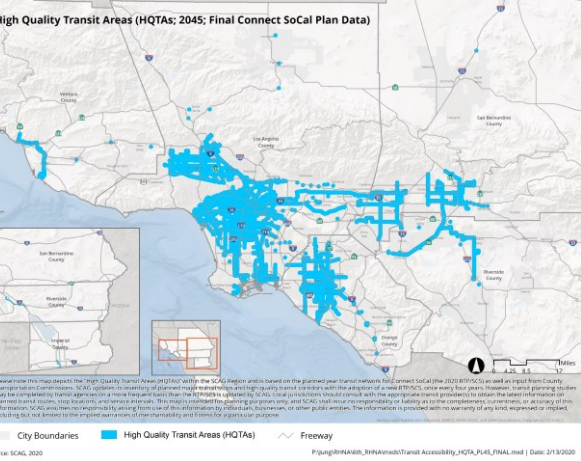


Source: SCAG 2023. The map identifies Tier2 TAZ Household Density Growth between 2019 - 2050 (Households per Square Mile). Priority areas refer to an area more than one PDA and no GRRAs. Resource areas refer to two or more GRRAs. For more information on Transportation Analysis Zones, please visit Section 7.5 of the Land Use and Communities Technical Report. The development patterns shown are based on Transportation Analysis Zone (TAZ) level data. Household and employment growth projection data at the jurisdiction level or smaller geography, including TAZ, are utilized (i) to conduct required modeling analysis and (ii) to generally illustrate how regional policies and strategies may be reflected at the neighborhood level. As such these data and maps are advisory and non-binding.

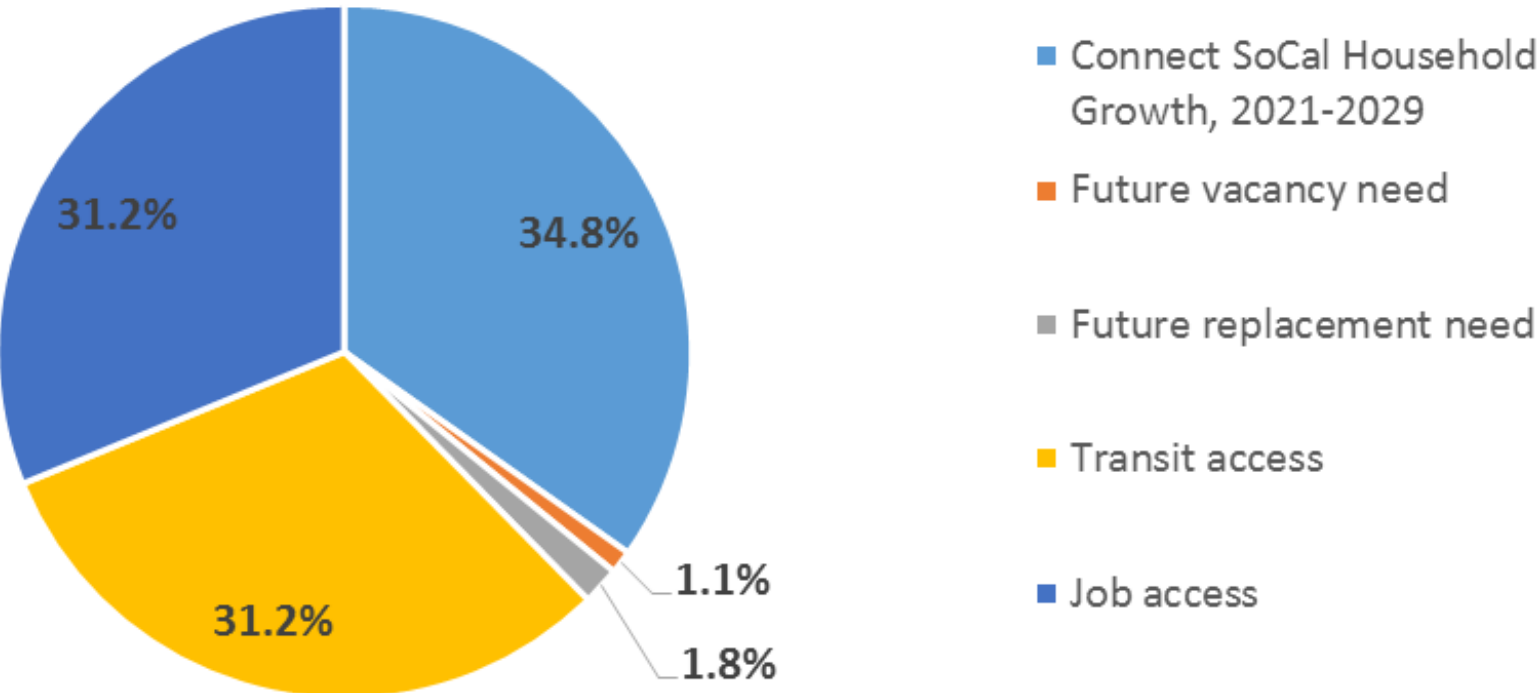
Final 6th cycle RHNA Methodology: A plan to allocate 1,341,827 units to 197 jurisdictions



Data Elements for Local Review



Staff Recommended Final RHNA Methodology - Regional Breakdown



Note: The final RHNA methodology uses jurisdiction-level Connect SoCal 2020–2030 household growth multiplied by 8.25 to match the duration of the RHNA planning period. At the jurisdictional level, Connect SoCal household growth is identical to local input, and over this time period is perfectly equivalent to the regional RHNA share depicted above.

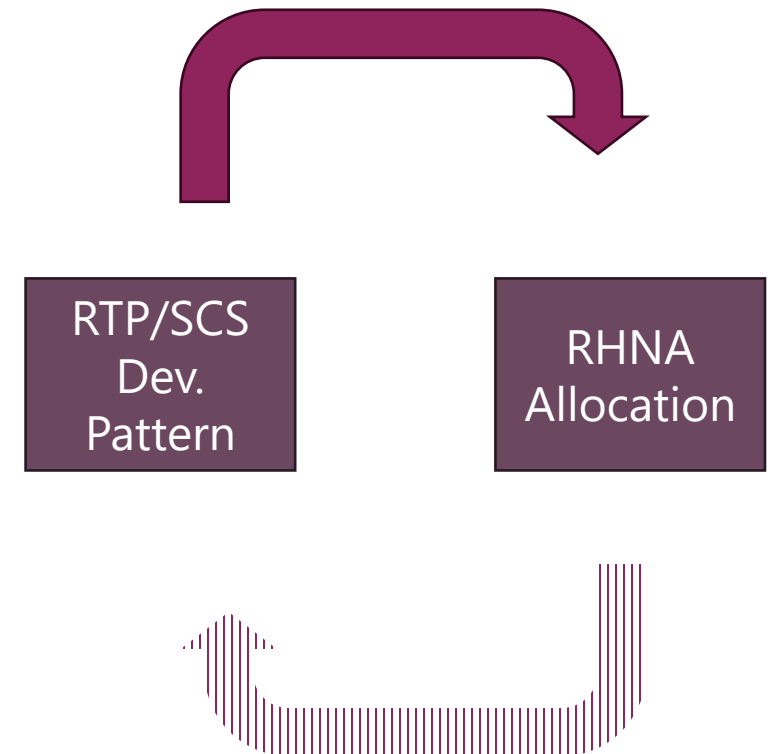
Statutory Provisions in practice

- **SCS can directly influence RHNA allocation:**

- SCS strategies and data can inform the MPO's allocation of housing needs to local jurisdictions
- Apply the SCS goals to the RHNA process

- **RHNA allocation can indirectly affect the SCS:**

- Local housing elements reflect where cities choose to zone/site their RHNA allocations
- Enabling zoning is one of many inputs to if & where growth will occur
- Market demand and exogenous factors are other major inputs



Regional Housing Needs Determination (RHND) Potentially One Year Earlier

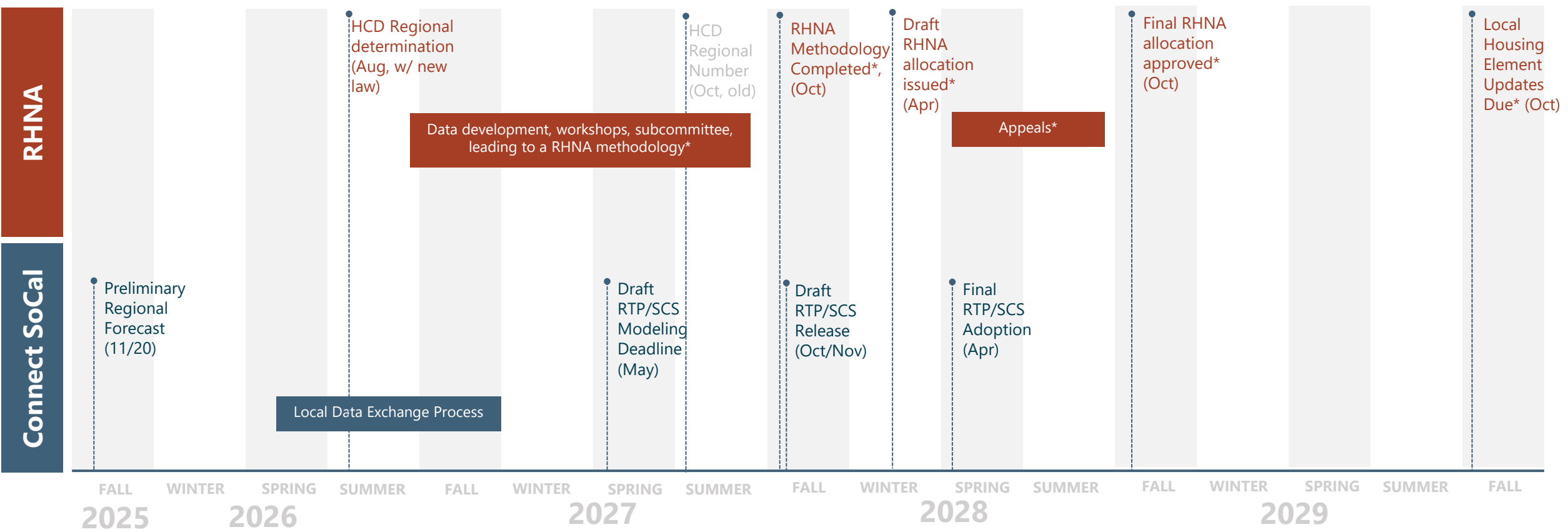


Language included in three active bills:

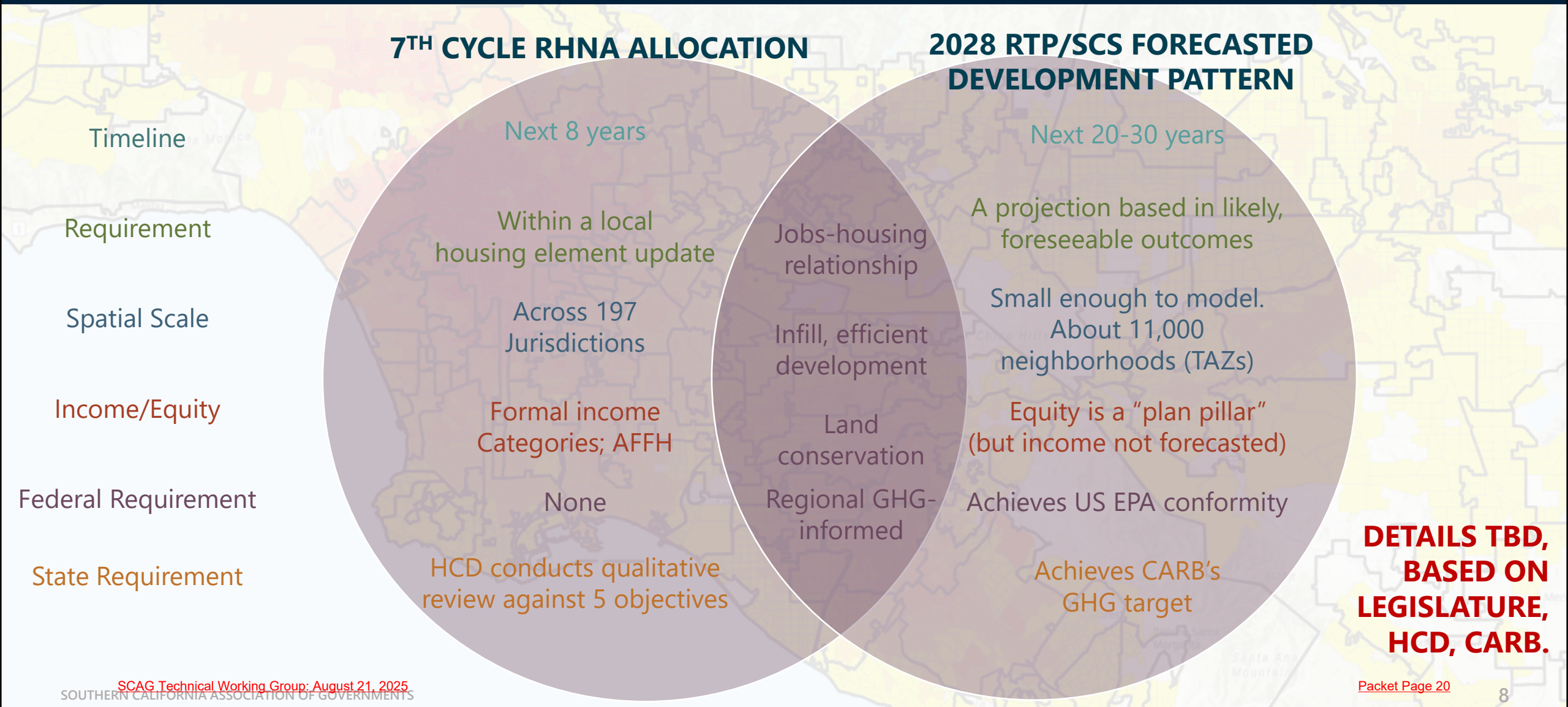
- **AB 1275 (Elhawary) – Regional housing needs: Regional transportation plan**
 - RHND would move from 26 to 38 months prior to housing element
 - Passed assembly & senate housing committee
- **AB 650 (Papan) – Planning and zoning: Housing element: RHNA**
 - RHND would move from 26 to 38 months prior to housing element
 - Passed assembly & senate housing committee
- **SB 233 (Seyarto) – RHNA: determination: consultation with COGs**
 - 38-month RHND plus enhanced COG consultation
 - Passed senate & assembly housing committee

See SCAG's bill tracker at <https://scag.ca.gov/legislation>

Connect SoCal and RHNA Estimated Schedule Comparison



Key Similarities and Differences



Brief Demographic Update

Kevin Kane, PhD

Planning Supervisor, Demographics and Growth Vision

August 21, 2025

TWG

WWW.SCAG.CA.GOV



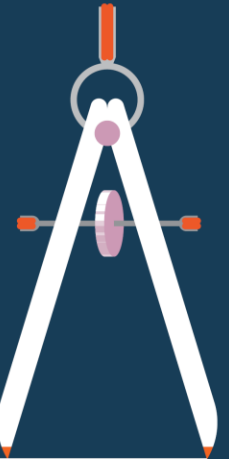
2025 Southern California Demographic Workshop

Proudly Partnered With

USC | Sol Price School
Price | of Public Policy

Oct. 1, 2025 | 9:00 a.m. | In-Person and Online

Revisiting the Intergenerational Contract



Register today!

SCAG Technical Working Group, August 21, 2025

scag.ca.gov/demographics

Packet Page 22

2028-2050 RTP/SCS Preliminary Growth Projections

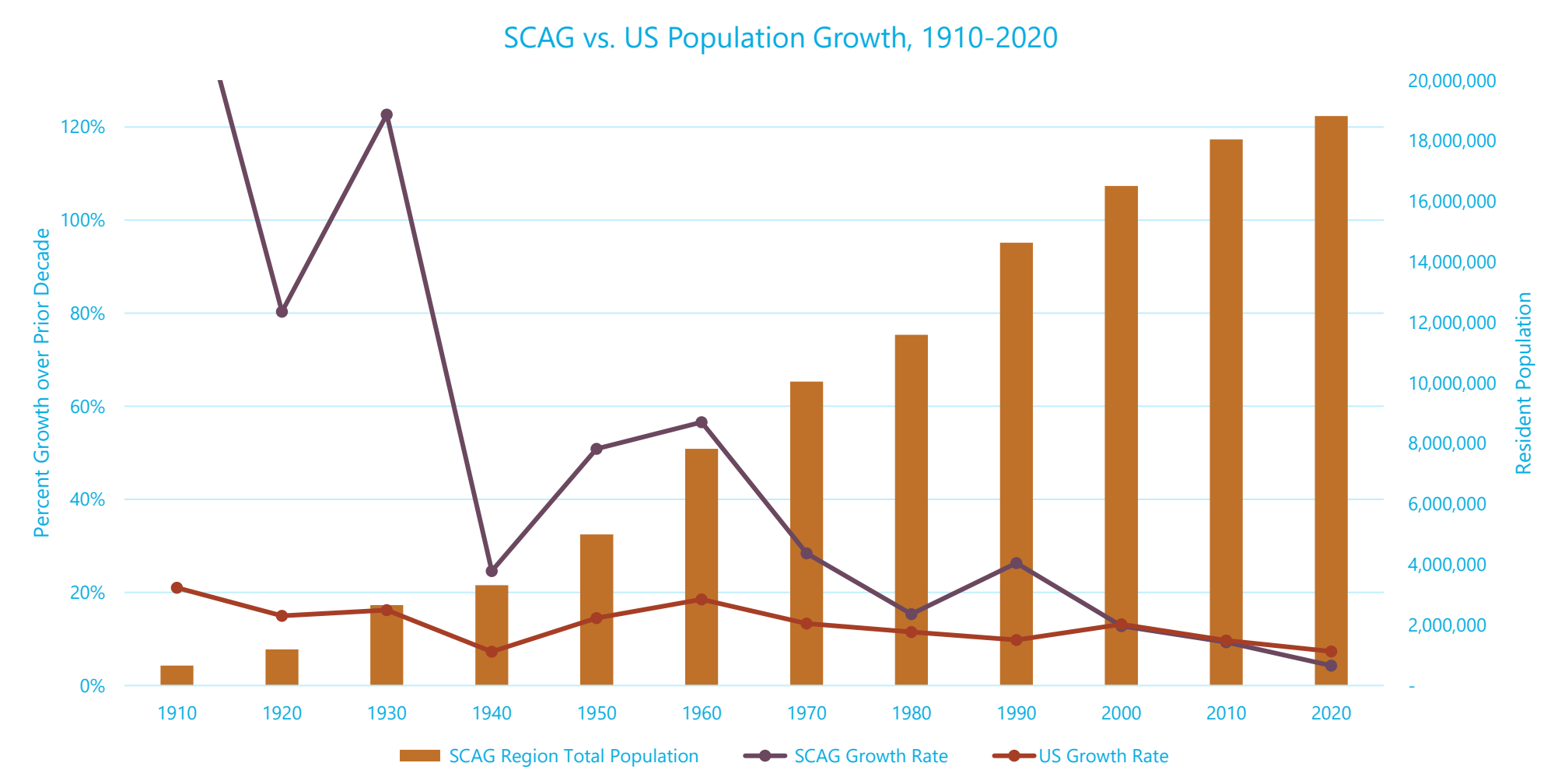
Expert Panel 9/9/25. Preliminary figures expected at 11/20/25 TWG.

Seven Major Inputs

- 1 ➡ Employment Growth
- 2 ➡ Births
- 3 ➡ Deaths
- 4 ➡ Immigration
- 5 ➡ Domestic Migration
- 6 ➡ Labor Force Participation
- 7 ➡ Household Formation (*Headship*)



Some Context: SCAG and US Long-Run Growth

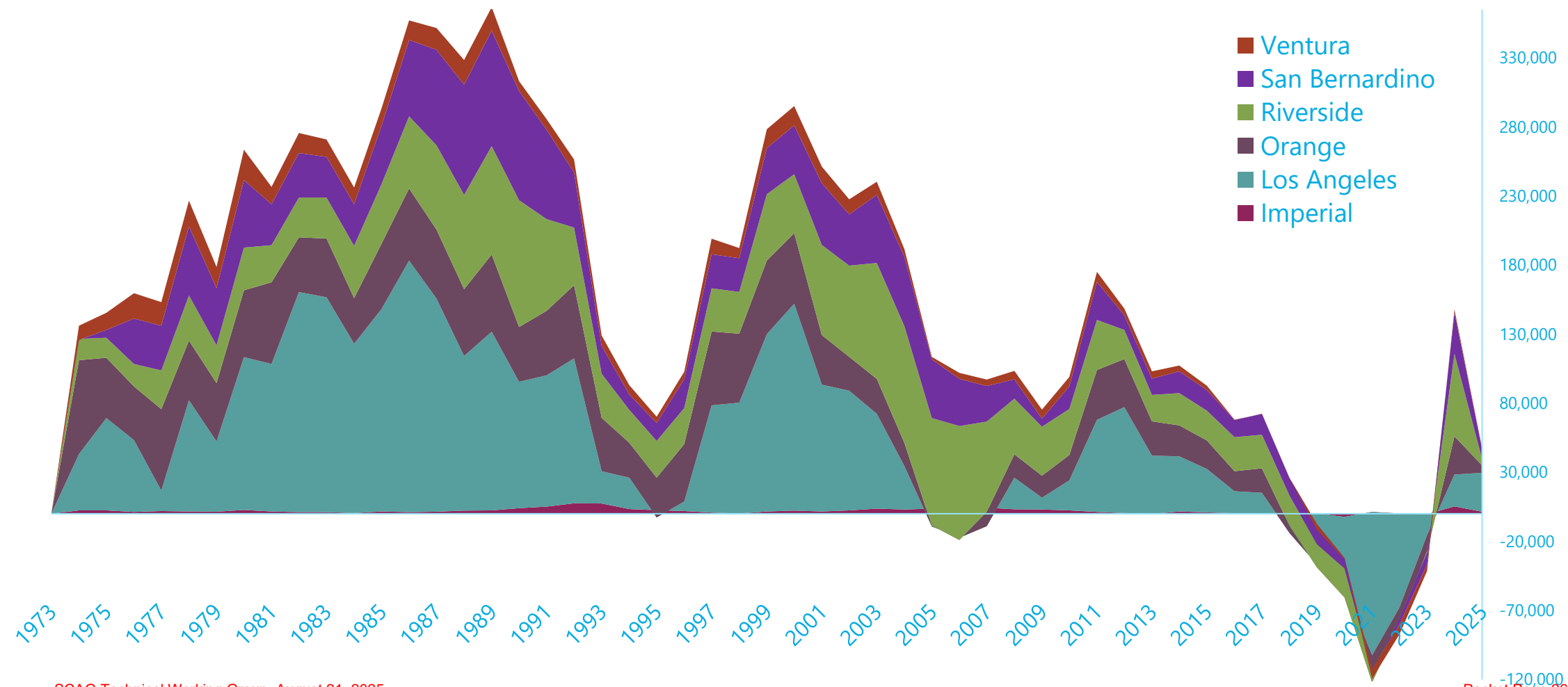


New Housing Production Consistently Exceeding Population Growth

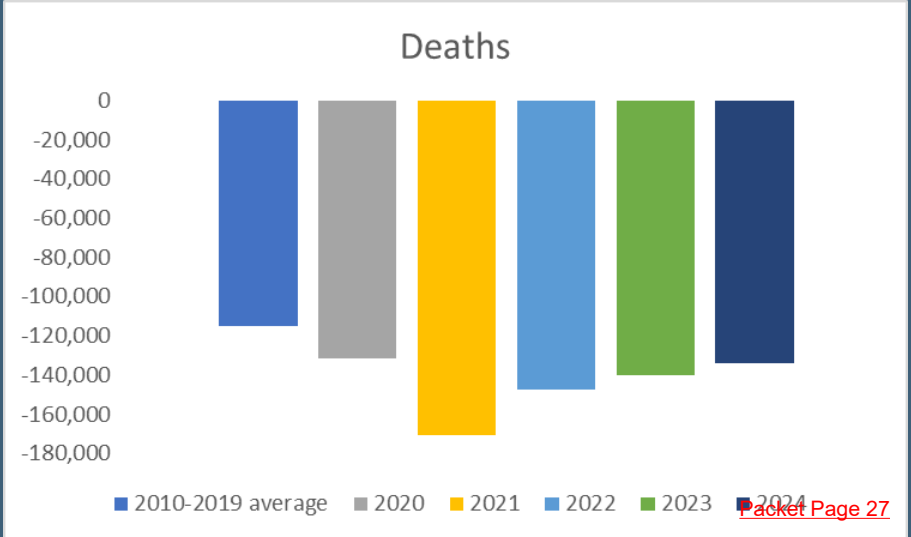
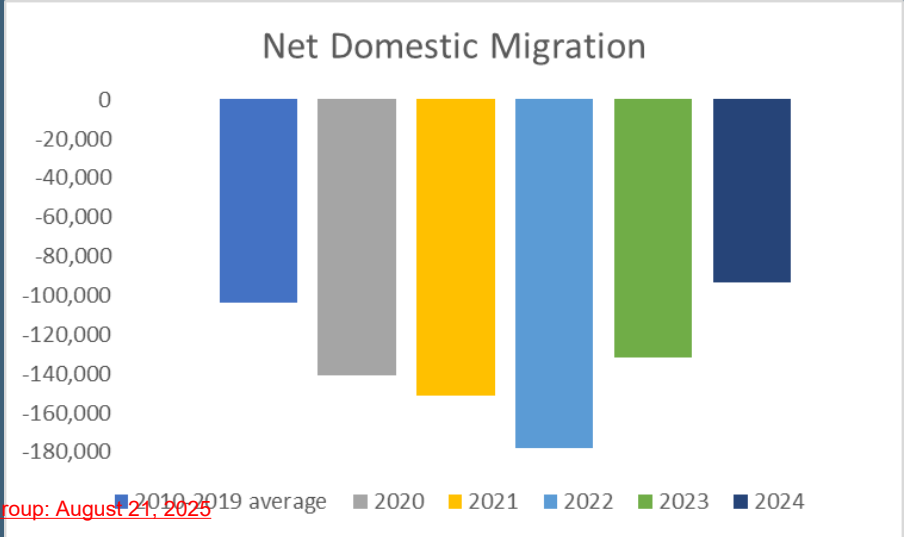
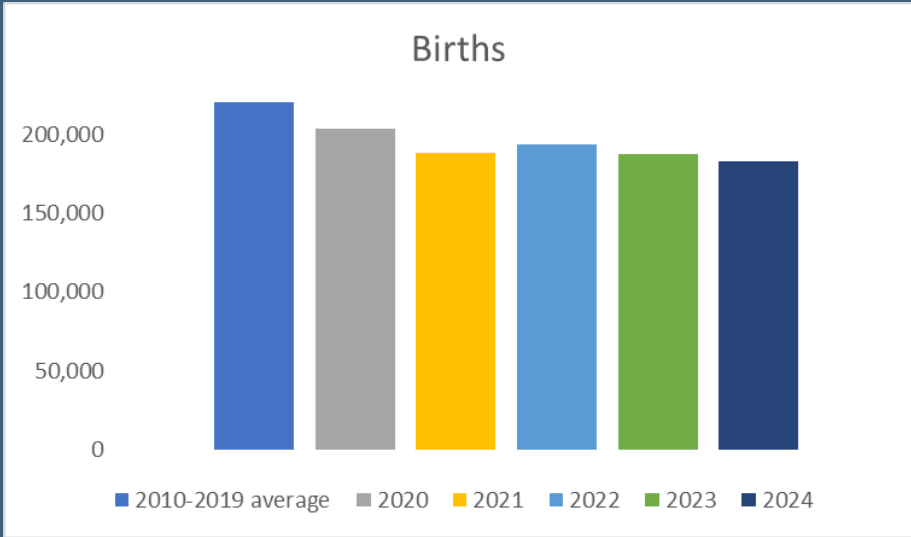
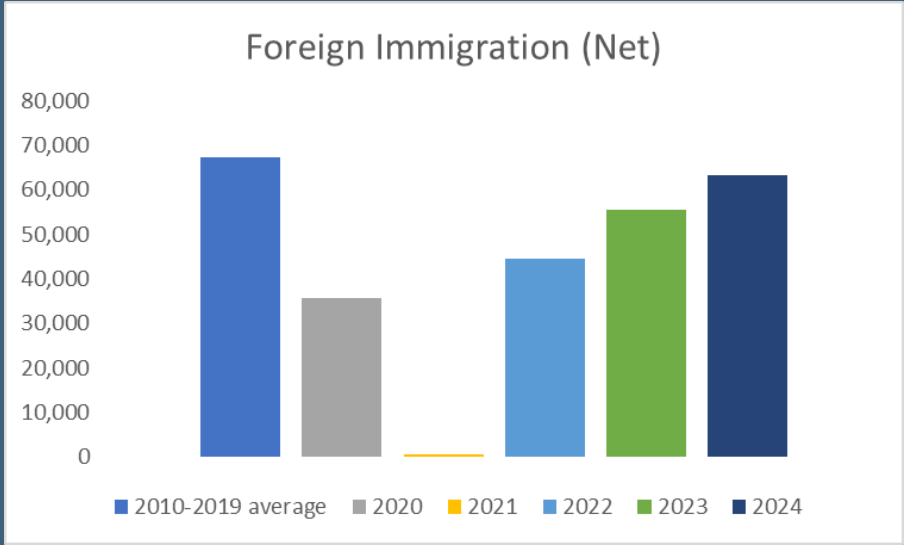
	past year		average of the past 10 years	
	Jan 1, 2024 to Jan 1, 2025		Jan 1, 2015 to Jan 1, 2025	
	Population Change	New Residential Units	Population Change	New Residential Units
Imperial County	1,505	318	673	310
Los Angeles County	28,168	30,122	-19,608	24,000
Orange County	5,357	6,419	2,694	8,607
Riverside County	4,603	10,915	19,364	7,511
San Bernardino County	7,073	6,474	9,324	4,654
Ventura County	822	2,805	-2,095	1,409
SCAG Region	47,528	57,053	10,353	46,489
<i>State of California</i>	<i>108,438</i>	<i>125,228</i>	<i>66,357</i>	<i>103,407</i>

Historical Population Change by SCAG County

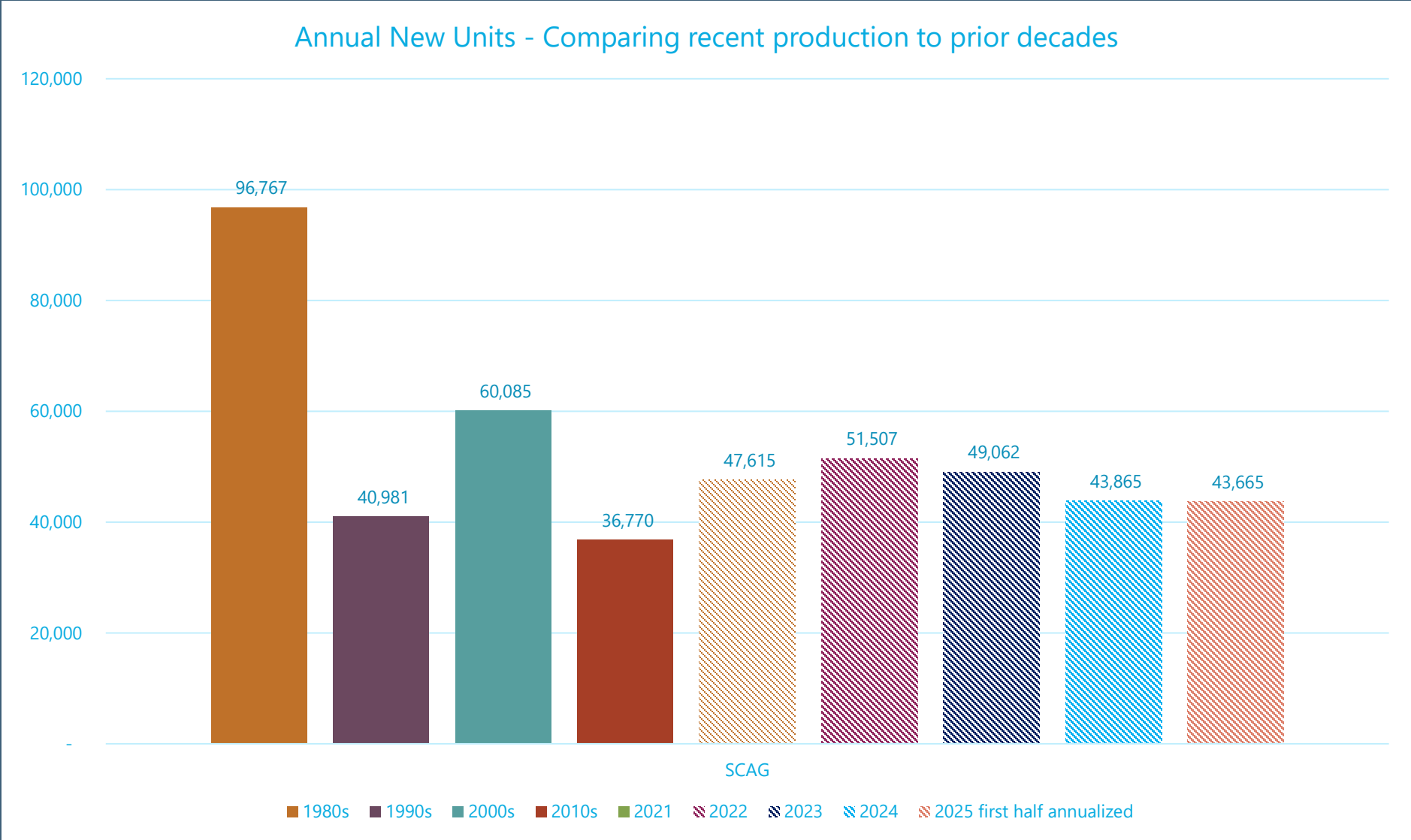
Annual Population Change by County



Components of Population Change, SCAG Region



New Housing Unit Production, SCAG Region





THANK YOU!

For more information, please visit:

<https://scag.ca.gov/economic-insights-data-resources>

Kevin Kane, PhD

Planning Supervisor, Demographics and Growth Vision

kane@scag.ca.gov